

# Lot Traceability

## Objective

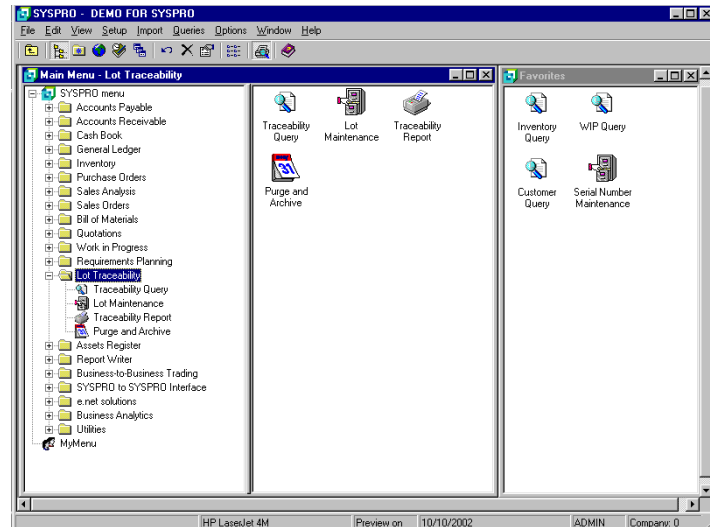
To trace items from their source to current location while maintaining quality assurance certification and tracking expiration dates.

## The Value of SYSPRO Lot Traceability

- Maintains a history of traceable items for accountability and customer service follow-up
- Keeps detailed notes about inspections
- Provides reject control and documentation
- Furnishes shelf life control
- Traces semi-finished or finished products from the supplier of raw materials through to the customer
- Allows for the same lot number to be used for multiple stock items
- Archives information on traceable items to conserve disk resources
- Provides for an on-screen query of current and/or archived data

## Matching SYSPRO to Your Business

- Query by item use (which customer, invoice, etc.) or by which item supply (i.e., which supplier, P/O, etc.)
- Traces serialized and non-serialized inventory items
- Automatically assigns sequential lot numbers by the system, or unique numbers as goods are received
- Lot number may default to work order number, for easy traceability
- Two-step purchase order receiving for quality control inspection
- Documents all rejects and scrap
- Flexible search program locates data when lot or serial numbers are not known
- Optional auto-depletion



## Audit Trails and Reporting

- Extensive reporting in detail or summary
- Report on current and/or archived costs

## Integration

- Lot Traceability integrates with the Inventory Control, Work in Progress, Purchase Orders and the Sales Orders & Invoicing modules
- Lot Traceability requires the Inventory Control module
- Preview of reports to screen
- E-mail reports with the Office Automation module