

Landed Cost Tracking

Objective

To provide visibility of imported goods while retaining control of all associated costs resulting in accurate landed costs.

The Value of SYSPRO Landed Cost Tracking

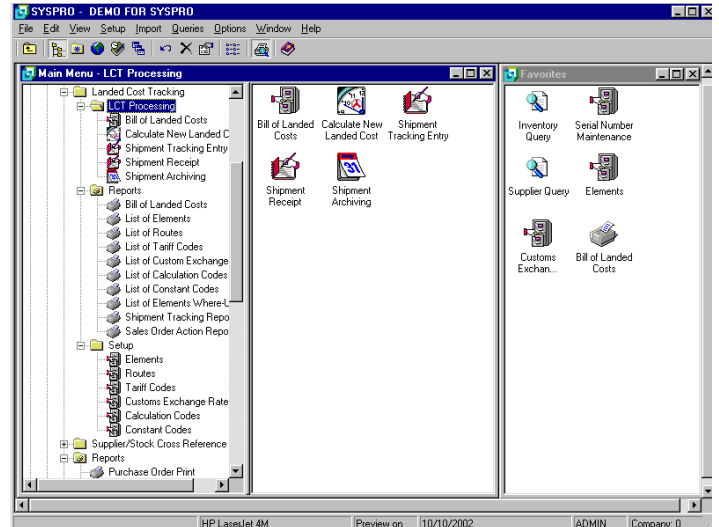
- Identifies all cost elements associated with goods that are purchased
- Monitors the progress of arrival dates of shipments
- Simplifies the receipt of shipments by pre-costing the shipment before the goods arrive
- Compares actual invoice cost with estimated costs for all cost elements
- Selects vendors based on shipping routes and associated costs
- Achieves true landed cost for each product through accurate cost apportionment based on volume, value, quantity, etc.
- Receives traceable stock items through inspection with lot and/or serial numbers
- Takes advantage of the Goods Received Note (GRN) system to trace element costs for accurate invoice matching
- Allows for different tariff codes
- Preview of reports to screen and e-mail capabilities

Audit Trails and Reporting

- Inventory journals are produced when the warehouse costs are updated
- Provides a detailed shipment tracking report
- The Sales Order Action Report cross references customer back orders with incoming long supplier shipments for improved customer service
- Retains shipments on file as required

Integration

- Integrates with the Inventory Control, Purchase Orders and Accounts Payable modules
- E-mail reports with the Office Automation module
- Landed Cost Tracking requires the Purchase Orders, Inventory Control and Accounts Payable modules



Matching SYSPRO to Your Business

- Sets up multiple alternate shipping routes for each stock item
- Allows the accumulation of multiple purchase orders into a single shipment
- The automatic cost roll-up will indicate the differences between landed costs and current inventory cost
- Revises shipment quantities if differences exist with the original purchase order
- Defines the currency rates for customs exchange calculations
- Defined a bill of costs for each inventory item
- Enters revised shipping dates which will automatically update the expected arrival dates
- Provides automatic routines to transfer landed cost price to the inventory warehouse costs
- Registers supplier invoices against the shipment registration system
- Archives the shipment once all the actual costs have been accumulated