

# Product Configurator

## Objective

To facilitate rapid order configuration by non-technical people in SYSPRO's Sales Orders & Invoicing and Quotations & Estimating modules.

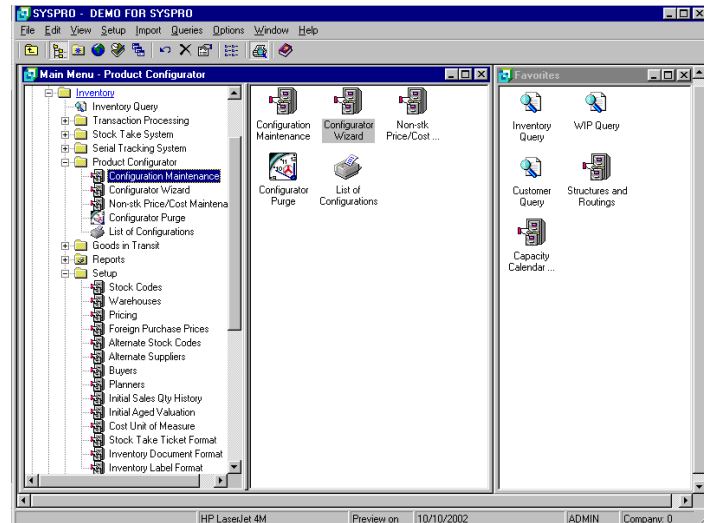
## The Value of SYSPRO

### Product Configurator

- Rules-based configurations ensure viable products
- Improves order entry by being able to configure complex products on the fly
- Provides an option to configure a standard inventory item
- Maintains a library of common configurations to easily recall repeat orders
- Calculates configurations based on the dimensions selected
- Preview of reports to screen and e-mail capabilities

### Matching SYSPRO to Your Business

- Ideal for “configure to order” companies that require top level assembly in order entry
- Defines selection criteria to determine the number of options presented for configuration
- Stores and recalls commonly used configurations
- Selection criteria can be optional or mandatory
- Selections may be dependent on other selections
- Generates labor requirements based on configuration selections
- Creates component dependencies based on options
- Checks availability of critical items before processing
- Under development indicator prevents premature use
- Option to generate a standard inventory part and BOM from configured selections
- Links to Syspro's production module providing the ability to generate work orders and jobs from the configuration
- Option to print selections on order documents
- Links the options to stock codes and operations
- Option to generate non-stocked item or leit-type
- Optionally generates “intelligent” part number based on selections.



## Audit Trails and Reporting

- Checks the gross profit of the configured items to ensure profit remains within acceptable limits
- Tests the configurations to verify that all the available options are dealt with accurately
- Defines invalid selections to verify that each configuration complies with technical requirements
- Checks the availability dates for resale products

## Integration

- Integrates with the Inventory Control, Sales Orders & Invoicing, Quotations & Estimating and the Work in Progress modules
- Links to the Work in Progress module, providing the ability to create work orders and jobs off the configuration
- Product Configurator requires the Inventory Control module